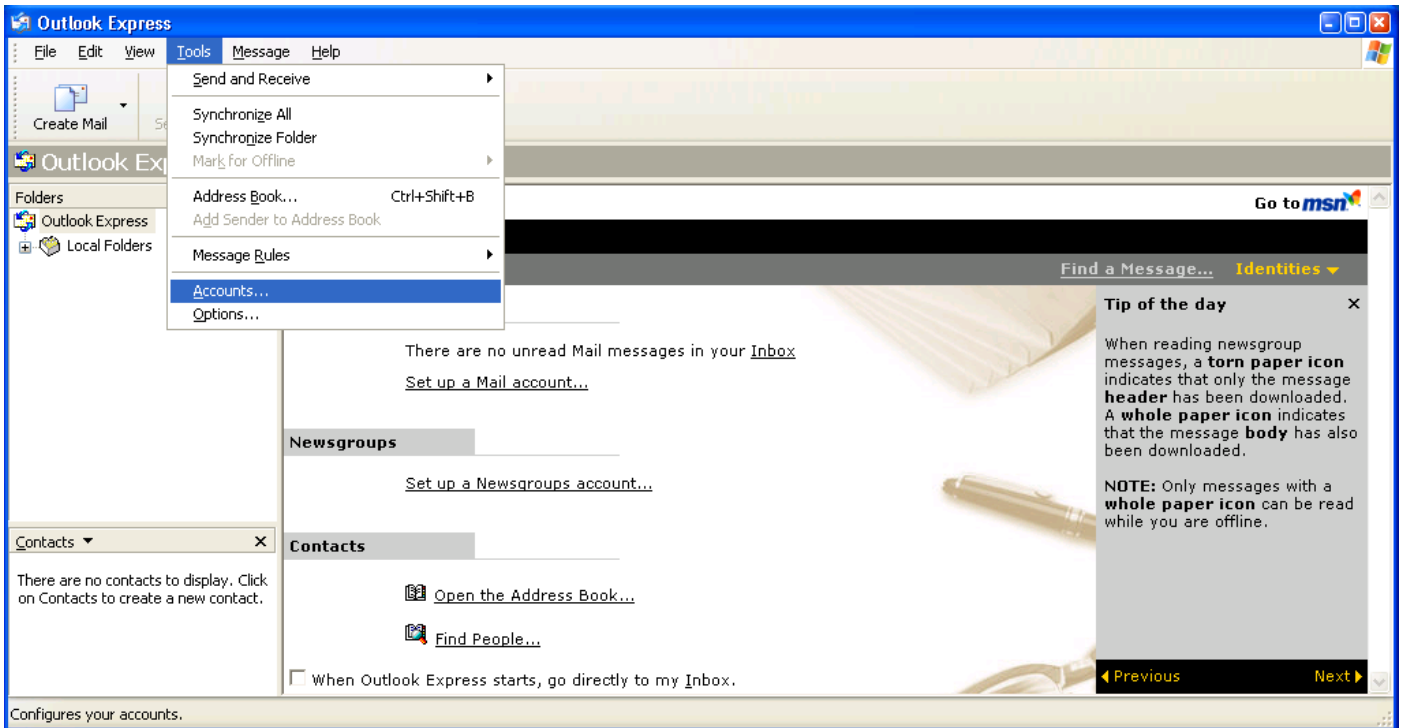
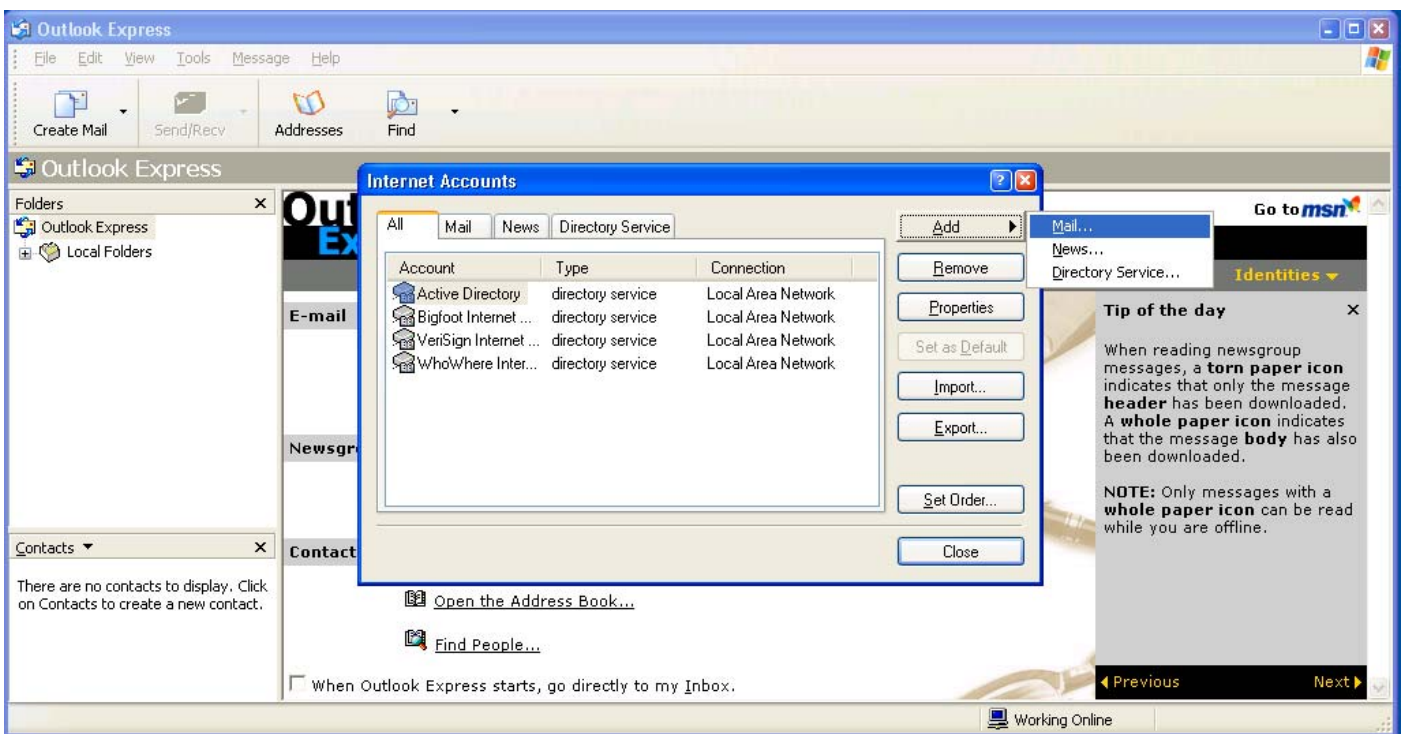


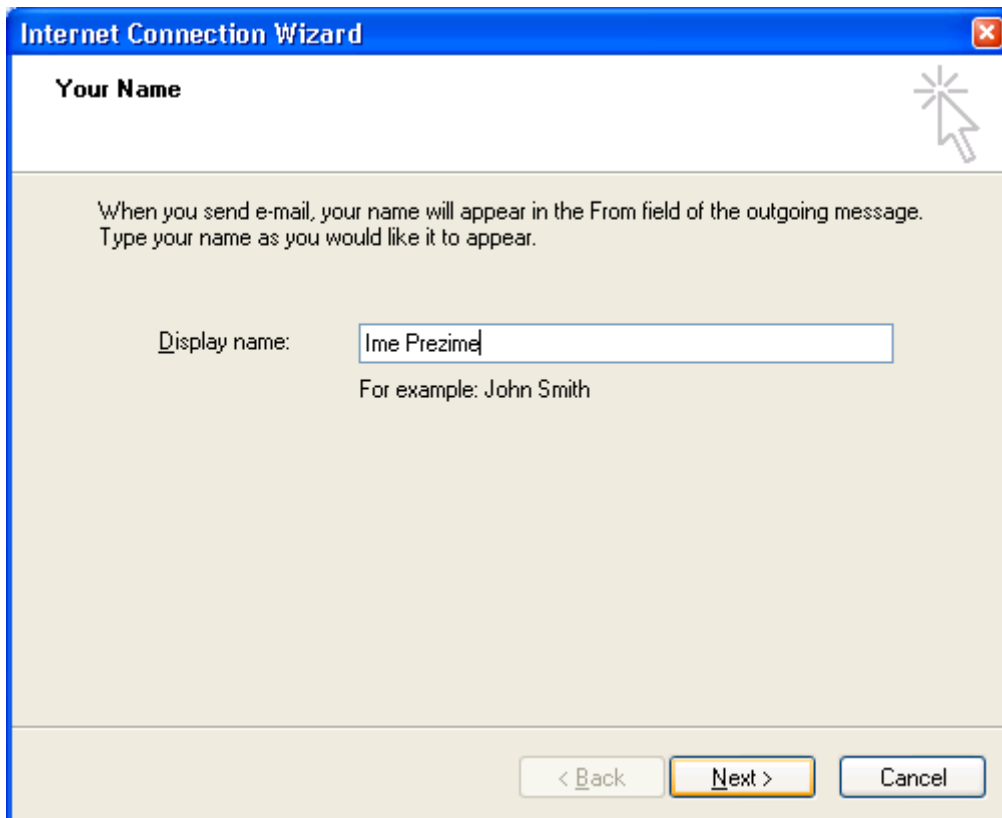
1. Otvorite program Outlook Express, iz menija Tools izaberite opciju Accounts... kao na slici ispod:



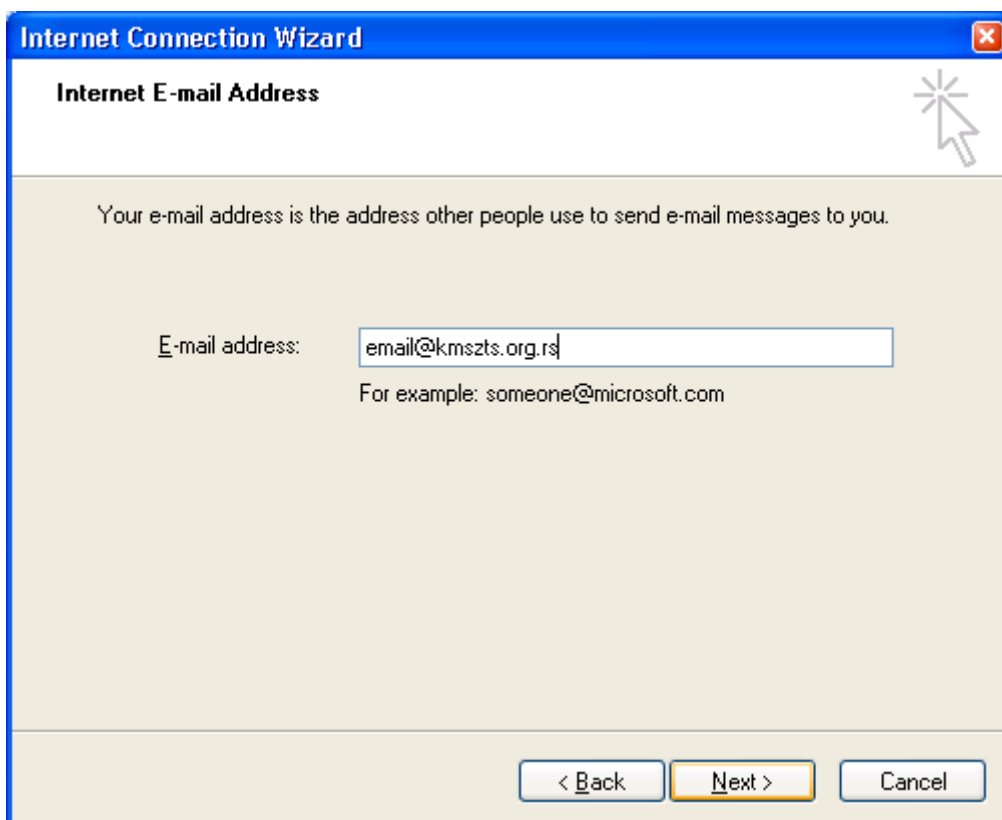
2. Kada se je otvorio prozor Internet Accounts idite na dugme Add > Mail...



3. Klikom na opciju Mail... kao što je prikazano na slici iznad pojaviće se čarobnjak za podešavanje email naloga kao na slici ispod, u Display name upišite vaše ime i prezime I kliknite na Next.



4. Zatim u polje Email address upišite vašu email adresu i idite na Next



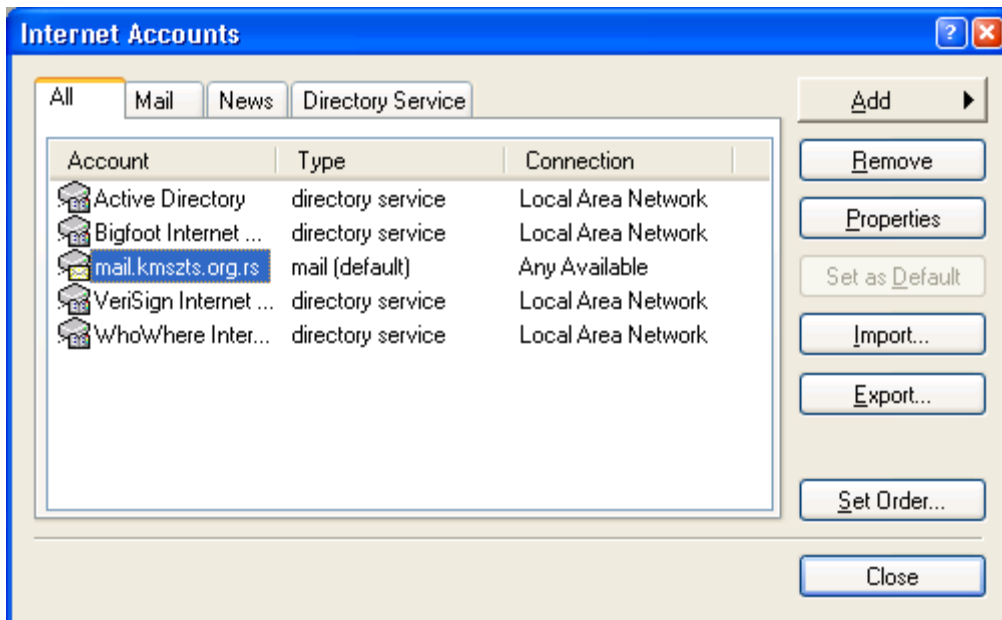
5. Na slici ispod je prikazano podešavanje POP3 i SMTP servera, podesite kao na slici

The screenshot shows the 'E-mail Server Names' dialog box in the Internet Connection Wizard. It has a blue title bar with the text 'Internet Connection Wizard' and a close button. The main area is light beige. At the top left, it says 'E-mail Server Names'. Below that, there is a dropdown menu set to 'POP3' with the text 'My incoming mail server is a ... server.' Below the dropdown is a text box containing 'mail.kmszts.org.rs'. Underneath, it says 'Incoming mail (POP3, IMAP or HTTP) server:'. Below that is another text box with 'mail.kmszts.org.rs'. Further down, it says 'An SMTP server is the server that is used for your outgoing e-mail.' Below that is a text box with 'mail.kmszts.org.rs'. At the bottom, there are three buttons: '< Back', 'Next >', and 'Cancel'.

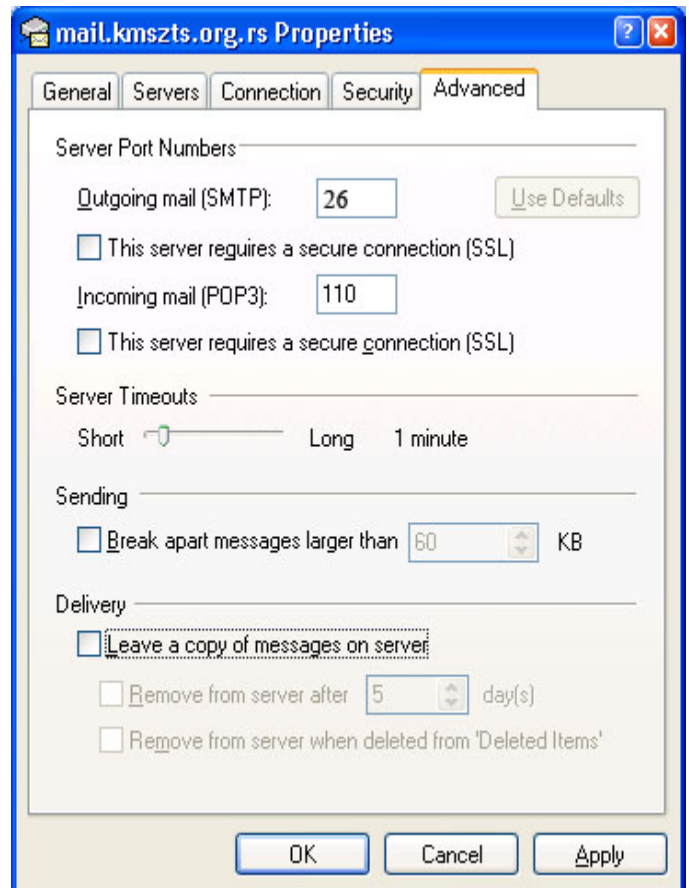
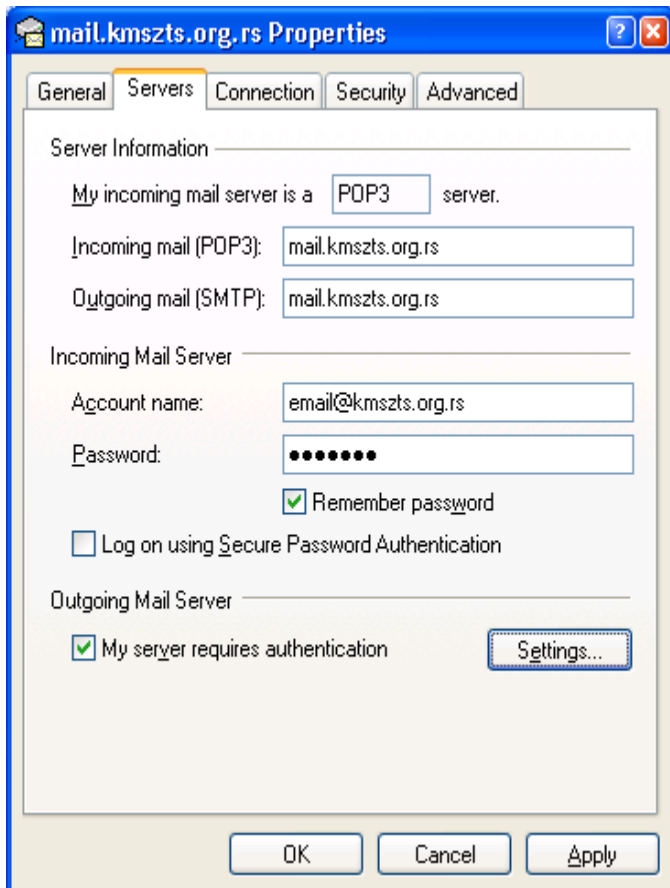
6. Zatim u Account name upišite vašu email adresu a u polje Password upišite vašu lozinku i idite na Next

The screenshot shows the 'Internet Mail Logon' dialog box in the Internet Connection Wizard. It has a blue title bar with the text 'Internet Connection Wizard' and a close button. The main area is light beige. At the top left, it says 'Internet Mail Logon'. Below that, it says 'Type the account name and password your Internet service provider has given you.' Below that is a text box labeled 'Account name:' containing 'email@kmszts.org.rs'. Below that is a text box labeled 'Password:' containing several dots. Below the password box is a checked checkbox labeled 'Remember password'. Further down, it says 'If your Internet service provider requires you to use Secure Password Authentication (SPA) to access your mail account, select the 'Log On Using Secure Password Authentication (SPA)' check box.' Below that is an unchecked checkbox labeled 'Log on using Secure Password Authentication (SPA)'. At the bottom, there are three buttons: '< Back', 'Next >', and 'Cancel'.

7. Sledeći prozor kazuje da su osnovna podešavanja završena i kliknite na dugme Finish.
8. Na slici ispod prikazana je lista naloga, izaberite vaš novo kreirani nalog i kliknite na dgme Properties



9. Otvoriće se prozor gde trebate otvoriti karticu Servers i uključiti opciju My server requires authentication



10. Zatim kliknite na karticu Advanced i isključite opciju Leave a copy of messages on the server i kliknite na OK i vaš nalog je spreman za korišćenje